



FORTEKS

**HERRINGBONE
LAMINATE** 

600x100x8mm

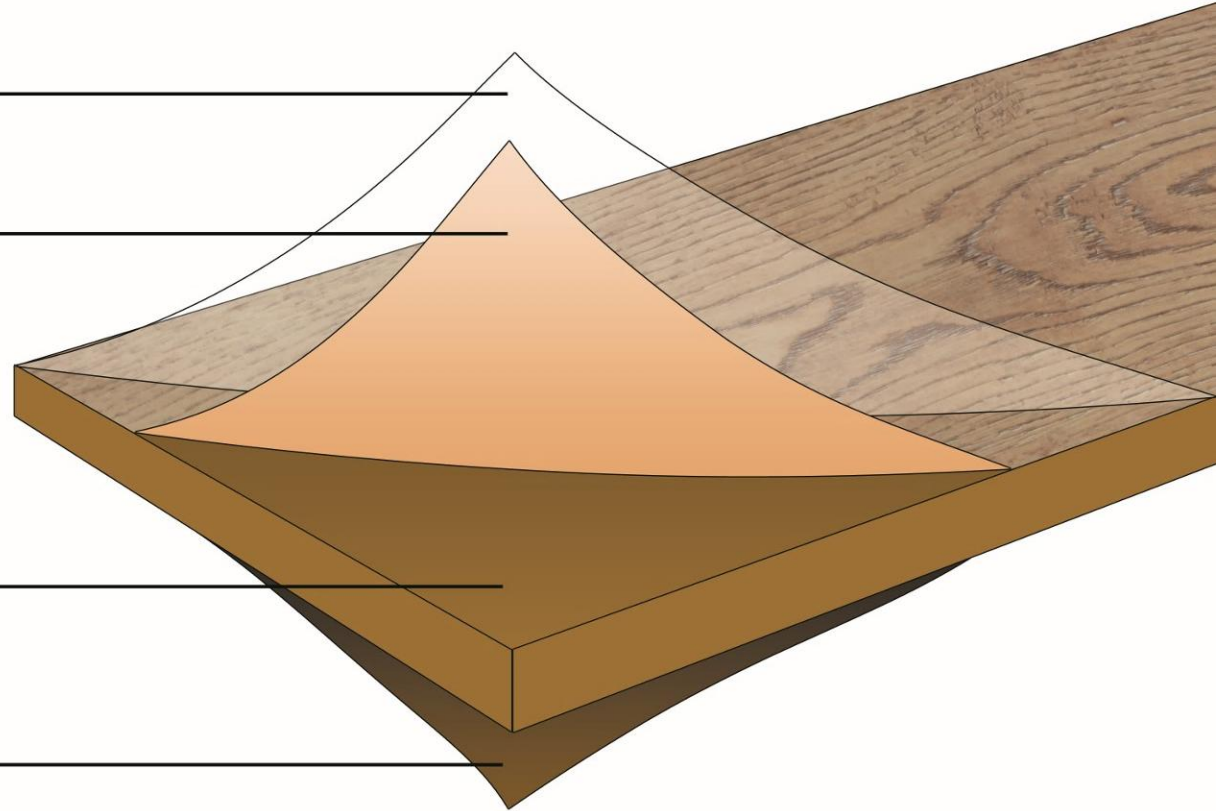
Laminate Floor Construction

Wear Layer

Decor Layer

HDF Baseboard

Backing Layer



FORTEKS

LAMINATE FLOOR ▶▶▶

FT12060 Fleming

Type	Herringbone
Size	600x100x8mm
Wear Layer	33
Surface	Wood Embossed
Edge	Painted Bevel
Usage	Commercial & Household



FORTEKS

LAMINATE FLOOR ▶▶▶

FT12054 Limburg

Type	Herringbone
Size	600x100x8mm
Wear Layer	33
Surface	Wood Embossed
Edge	Painted Bevel
Usage	Commercial & Household



FORTEKS

LAMINATE FLOOR ▶▶▶

FT71111-19 Walloon

Type	Herringbone
Size	600x100x8mm
Wear Layer	33
Surface	Wood Embossed
Edge	Painted Bevel
Usage	Commercial & Household



FORTEKS

LAMINATE FLOOR ▶▶▶

FT25012-7 Bree

Type	Herringbone
Size	600x100x8mm
Wear Layer	33
Surface	Wood Embossed
Edge	Painted Bevel
Usage	Commercial & Household



FORTEKS

LAMINATE FLOOR ▶▶▶

FT6052-304 Brabant

Type	Herringbone
Size	600x100x8mm
Wear Layer	33
Surface	Wood Embossed
Edge	Painted Bevel
Usage	Commercial & Household



FORTEKS

LAMINATE FLOOR ▶▶▶

FT16014-4 **Namur**

Type	Herringbone
Size	600x100x8mm
Wear Layer	33
Surface	Wood Embossed
Edge	Painted Bevel
Usage	Commercial & Household



FORTEKS

LAMINATE FLOOR ►►►

FT 18504-1 **BRUME**

Type: herringbone

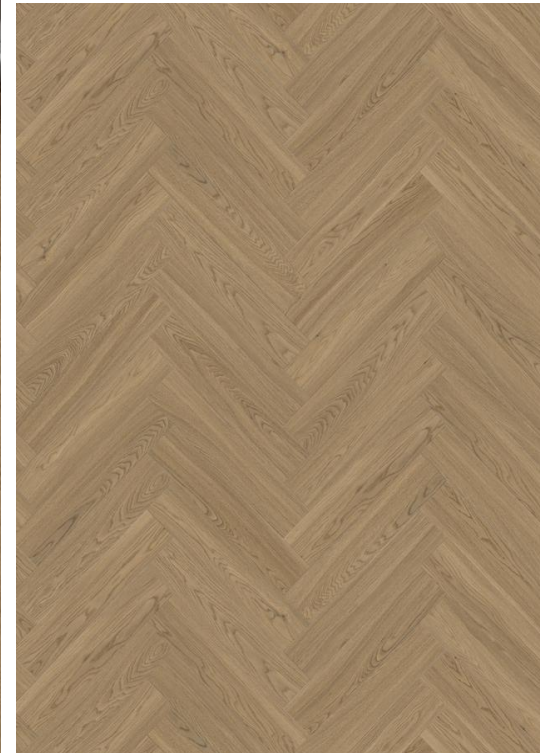
Size: 600 x 100 x 8 mm

Wear layer: 33

Surface: Wood Embossed

Edge: Painted Bevel

Usage: Commercial & Household



FORTEKS

LAMINATE FLOOR ►►►

FT 9331-23A

VIRTON

Type: herringbone

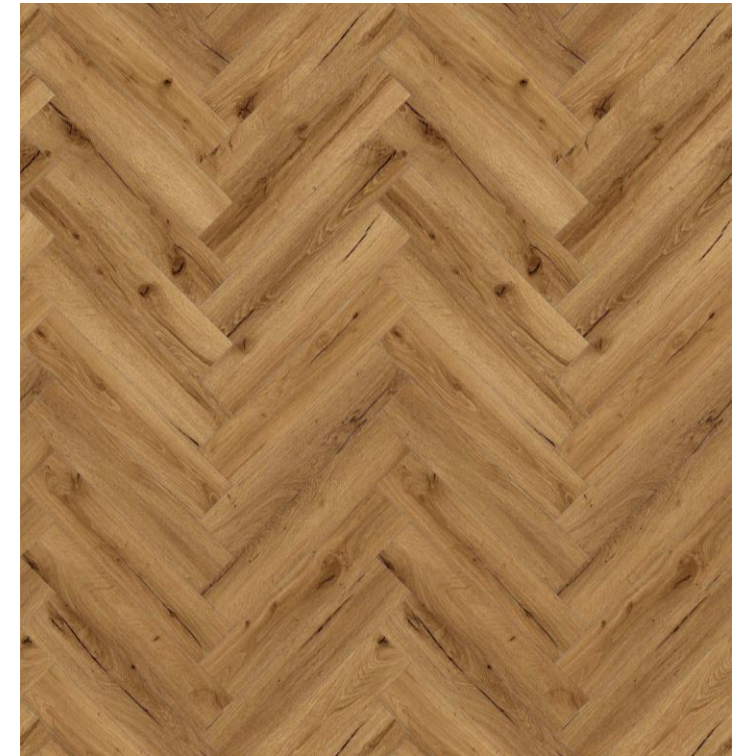
Size: 600 x 100 x 8 mm

Wear layer: 33

Surface: Wood Embossed

Edge: Painted Bevel

Usage: Commercial & Household



FORTEKS

LAMINATE FLOOR ►►►

FT 18504-12

ELARA

Type: herringbone

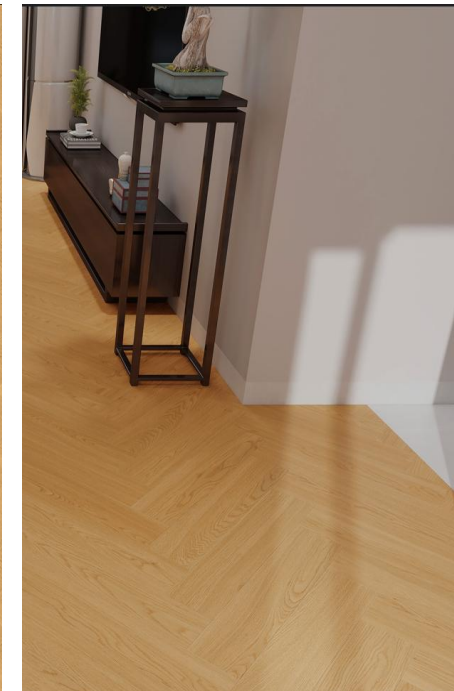
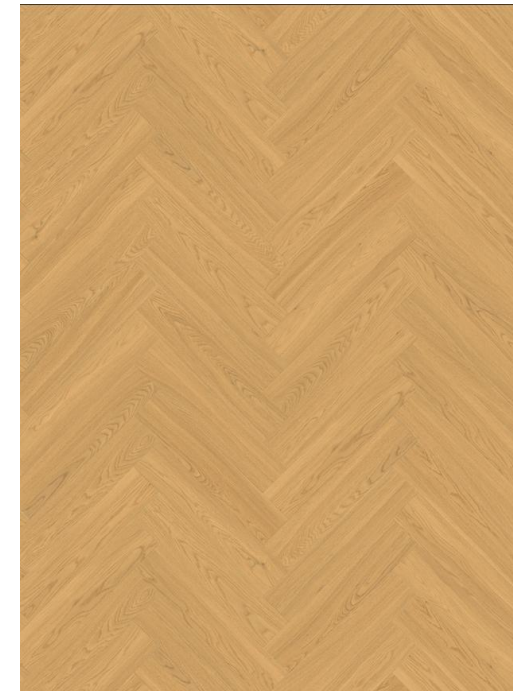
Size: 600 x 100 x 8 mm

Wear layer: 33

Surface: Wood Embossed

Edge: Painted Bevel

Usage: Commercial & Household



FORTEKS

LAMINATE FLOOR ►►►

FT 1504-4 **VILSON**

Type: herringbone

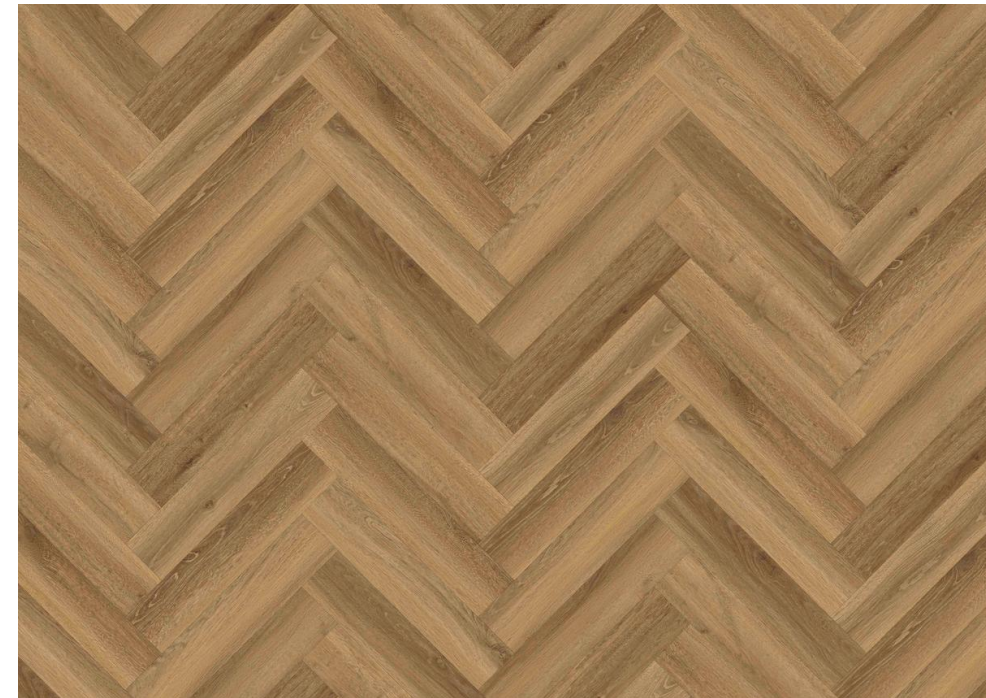
Size: 600 x 100 x 8 mm

Wear layer: 33

Surface: Wood Embossed

Edge: Painted Bevel

Usage: Commercial & Household





FORTEKS

LAMINATE FLOOR ▶▶▶

FT 9331-23A **LIER**

Type: herringbone

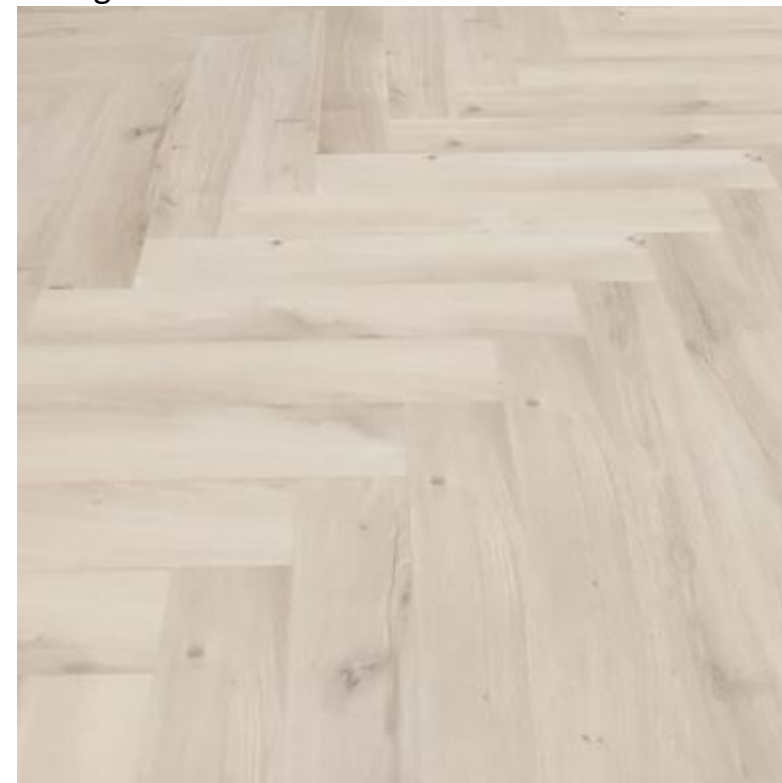
Size: 600 x 100 x 8 mm

Wear layer: 33

Surface: Wood Embossed

Edge: Painted Bevel

Usage: Commercial & Household



FORTEKS

LAMINATE FLOOR ►►►

FT 6052-304

BRABANT PLANK

Type: plank

Size: 1215 x 145 x 8 mm

Wear layer: 33

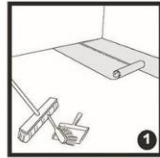
Surface: Wood Embossed

Edge: Painted Bevel

Usage: Commercial & Household



Laminate Floor Installation Instruction



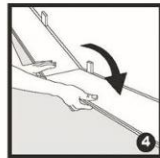
- 1** To start, ensure that no damage has been done to the flooring during transportation. After cleaning the floor surface you can roll out the plastic sheet and underlay material. The plastic sheet should overlap by at least 20 cm / 8".



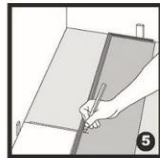
- 2** Door Frames: saw the doorframe, resting the flat edge of the saw against a board so that the board can fit underneath.



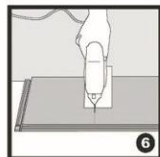
- 3** Lay the first board against the left wall, with the tongue-side towards the wall. Make sure you leave a space of 8 to 10 mm / 1/3 to 3/8", to allow for expansion. If the wall is uneven, the boards should be sawn and adapted to the contour of the wall.



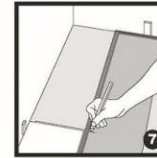
- 4** Insert the end of the second board into the end of the first, pressing them together and pushing gently down towards the floor. Complete the first row in the same manner.



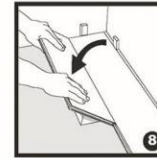
- 5** At the end of the row, place the last board face down, with the short side (side without the groove) facing the wall. Mark the floorboard where it has to be cut, making sure to leave a space of 8 to 10-mm / 1/3 to 3/8" to allow for expansion.



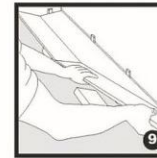
- 6** To cut the boards, place them face down against the work surface and cut to the desired shape using a jigsaw. If using a traditional hand saw, place the board face up and use a fine-toothed blade.



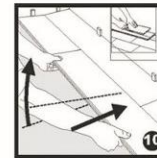
- 7** Start the second row by using the leftover part of the board you have sawn. It should be at least 30 cm / 10" long. If not, use a new board, cutting it into two. Make sure that the end joints are always least 30-cm / 10" apart.



- 8** Place the sawn board by tilting it against the first row board. Exert pressure and, at the same time, press down towards the floor. Place a triangular wedge under the board.



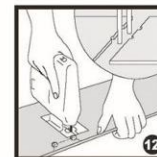
- 9** Place the end of the second board against the end of the first board and fit them together by pressing down towards the floor. Be sure to correctly align the boards, and position another triangular wedge.



- 10** Continue in this way with the whole row. Be sure that the strip is driven well into the groove, and press the boards strongly towards the floor so as to fit them together. Remove the wedges at the same time.




- 11** Before laying the final row, measure and saw the board accordingly. Leave 8 to 10 mm / 1/3 to 3/8" gap between the board and the wall to allow for any expansion.



- 12** Pipes. Measure the diameter of the pipe and allow for an extra 10 mm / 3/8" leeway. After cutting the board as illustrated in the diagram below, lay the board and the part sawn off.

САЛОН НАПОЛЬНЫХ ПОКРЫТИЙ

 **+7 771 229 6237**

проспект Жибек Жолы 135, Алматы, РК
ТЦ Жибек Жолы, А37 бутик; 1 этаж

FORTEKS



@FORTEKS_FLOORS